

Annalee Davis*A Hymn to the Banished*, 2022

Outer box overall: 7 x 50 x 32cm (inner box: 6 x 48.5 x 29.6cm)

Edition of 3

Screenprinted and buckram-covered archival tray box:

(image detail)

PART I: As long as we see, and we know and we remember (Merle Collins), 2022Screenprint on tray box cover from scanned linen tray cloth with cut work embroidery overlaid with screenprinted *Impossible Map*

32 x 50cm (size of box lid)

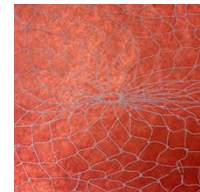
Edition of 8

*PART II: A Fishnet from Glenburnie*, 2022

Screenprint on Red Lokta 120gsm paper (tray box lining)

51 x 76cm

Edition of 8



Containing the following works:

PART III: A Scroll of Banished Women, 2022

Screenprint and laser-cut woodblock print on Atsu Shi 67gsm paper

44 x 98cm

(when rolled in box approximately 45 x 4.5 x 4.5cm)

Edition of 8

*PART IV: A Book of Healing Plants*, 2022

Hardbound book with soft ground etching, screenprint

and digital print on Awagami Kozo 70g paper

2 x 29 x 18cm

Edition of 3

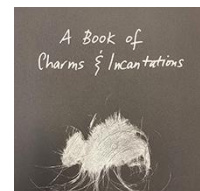
*PART V: A Book of Charms & Incantations*, 2022

Handwritten incantations on Simile Japon 130gsm paper and screenprint

printed on verso with silver ink, hardbound in Maya Clairefontaine

120gsm paper, 4 x 36.5 x 25cm

Edition of 3

*PART VI: A Choker*, 2022

Paper pulp cast of crochet work with Barbadian and Scottish seaweed, embroidery

thread and soft ground etching on Somerset Satin 300gsm paper

24.5 x 18cm

Edition of 8



PART VII: Charming, 2022

Three archival boxes, each containing a Takuhon printed drift seed
Individual boxes 3.5 x 10.5 x 9.5cm each
Editions of 3



PART VIII: Thread, Round, Hook, Whip, 2022

Screenprint and chine-collé on Peregrina Anthracite Fractal (290gsm)
paper
42.5 x 42.5cm
Edition of 8



PART IX: An Impossible Map, 2022

Relief print of laser-cut plywood model of contour lines from
Scotland District of Barbados and Kyle of Lochalsh, Balmacara in the
Scottish Highlands
29 x 42cm
Edition of 8



Commissioned by the National Trust for Scotland and printed in collaboration with Dundee Contemporary Arts Print Studio.

A Hymn to the Banished explores connections between Scotland and Barbados through the 2022-commissioned artwork as part of the National Trust for Scotland's ongoing mission to face the legacies of slavery and empire in its properties. This limited edition box set of print works takes this landscape as a historic point of departure, drawing a thread from 1800 when Francis Humberston MacKenzie, landowner of Lochalsh and Kintail in northwest Scotland, became Governor of Barbados. Known as Britain's first sugar isle, its economic prosperity was built upon the labour of enslaved Africans, white indentured servants, both men and women, and the sugar trade.

A Hymn to the Banished insinuates an interlacing of imperial linkages between Barbados and Scotland, inferring centuries of social disruption caused by the plantation system and the colonial project. With the forced transplantation of hundreds of thousands of enslaved Africans and numerous Scottish, Irish, Welsh and English indentured labourers, systems of knowledge and rituals crossed the world's ocean currents, building new cultures in the foreign lands of the West Indies.

British imperialism imposed banishment and generated suffering. Yet, deep knowledge and a desire to heal profound traumas elicited practices that relied on ancient traditions connected to the land and the remembering of sacred rites. This

bespoke box is covered with a screen print of a Barbadian-made linen tray cloth reminiscent of those from Ayrshire layered with contour lines of the Scotland District of Barbados and the Scottish Highlands. The interior of the box is lined with a turpiti fishnet from Glenburnie, Barbados, which captures and holds seven works including a scroll of banished women, two handmade books, a choker, three charms, wriggling parasites and an impossible map.

This limited edition explores notions of rupture, friction, entanglements, and the need to belong in strange places through rituals of incantations, charms, and the desire to repair the ills of British Empire-era indentureship and slavery.